

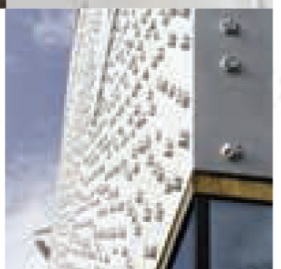
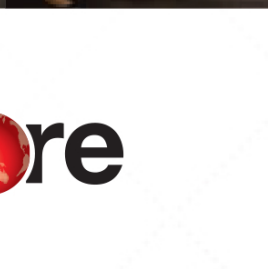
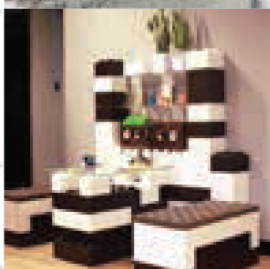
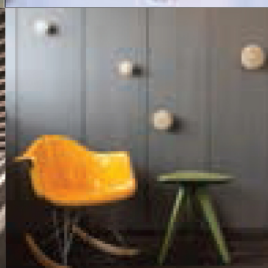
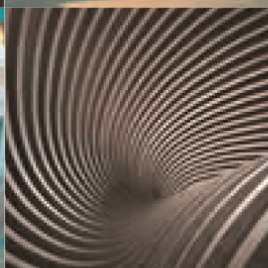
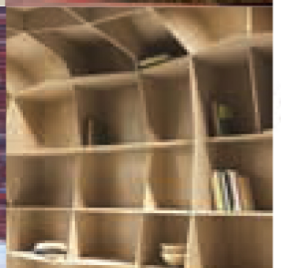
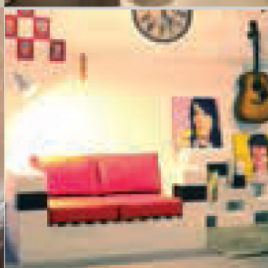
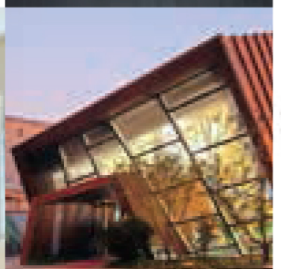
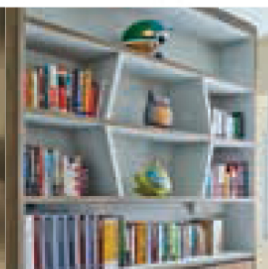
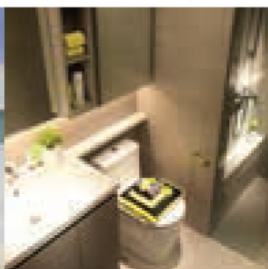
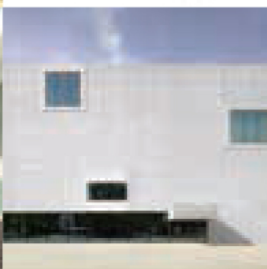
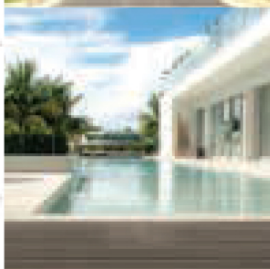
# SINGAPORE 2017

## PAVILION SHOWCASE

**Archidex 2017**

Kuala Lumpur Convention Centre  
Malaysia

19-22 July 2017

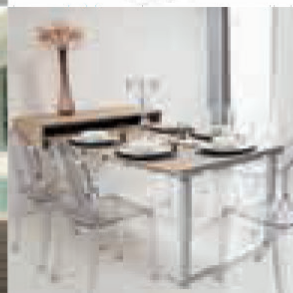
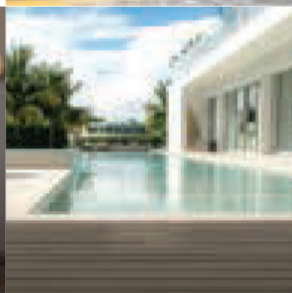
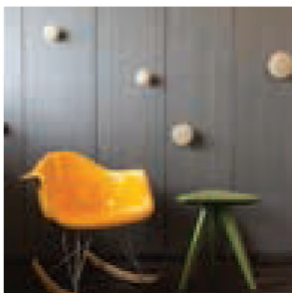
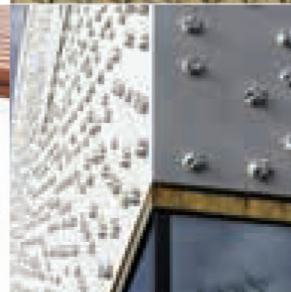
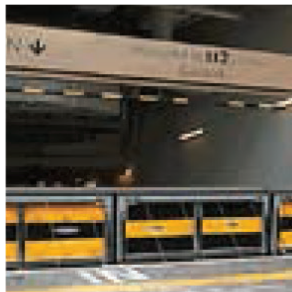
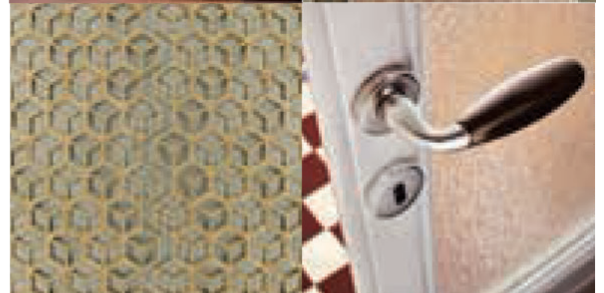
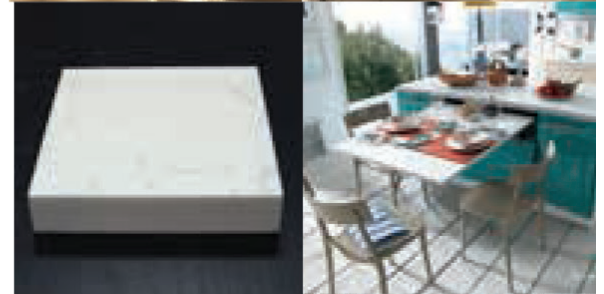
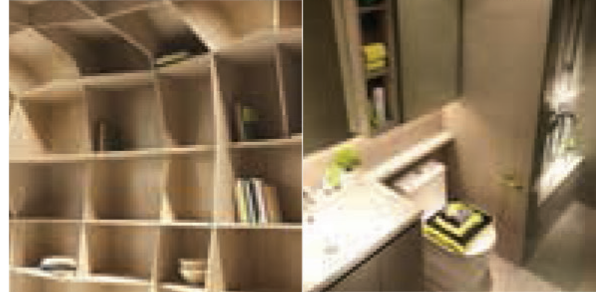
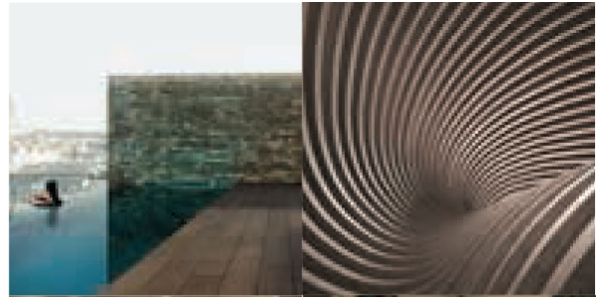


FUTURE READY  
**singapore**



# Contents

- 2 About IE Singapore and SFIC
- 3 Hall Layout & BAFCO Singapore Pte Ltd  
(Big Ass Fans)
- 4 Catalyste Pte Ltd & EDL Pte Ltd
- 5 Elmich Pte Ltd & EWINS Pte Ltd
- 6 Greenlam Asia Pacific Pte Ltd &  
Kompacplus Pte Ltd
- 7 Multimedia Engineering Pte Ltd &  
TR Formliners Pte Ltd
- 8 Vector Foiltec Pte Ltd





## International Enterprise (IE) Singapore

International Enterprise (IE) Singapore is the government agency driving Singapore's external economy. It spearheads the overseas growth of Singapore-based companies and promotes international trade.

With its global network in over 35 locations spanning many developed and emerging markets, IE Singapore attracts global commodities traders to establish their global

or Asian home base in Singapore and connects businesses with relevant Singapore-based companies for their business expansion.

Visit [www.iesingapore.com](http://www.iesingapore.com) for more information.

230 Victoria Street #10-00 Bugis Junction  
Office Tower Singapore 188024

T +65 6337 6628

F +65 6337 6898



## Singapore Furniture Industries Council

**Singapore Furniture Industries Council**

**Booth No. 6F766**

Singapore Furniture Industries Council (SFIC) was established in 1981 as the official representative body of Singapore's furniture and furnishings industry. Its membership comprises furniture manufacturers, interior fit-out specialists, retailers, designers, as well as furnishings and materials suppliers. Currently, the council represents 95% of established furniture manufacturers in Singapore, of whom 65% have subsidiary manufacturing plants in various countries across the region, including China, Indonesia, Malaysia, Myanmar, Thailand, and Vietnam.

SFIC's primary role is to promote the interests of its members and of the Singapore furniture and furnishings industry.

For 36 years, SFIC has helped its members to adapt to changes in the business environment by introducing trade, talent, design development and business innovation activities, as well as upgrading business capabilities. Revolving around SFIC's 3i strategic framework – Improve, Innovate, and Integrate, all of the Council's programmes aim to grow the local furniture and furnishings industry and ultimately, to strengthen the 'Singapore brand' globally.

Visit [www.singaporefurniture.com](http://www.singaporefurniture.com) for more information.

T +65 6569 6988

F +65 6569 9939

E [sfic@singaporefurniture.com](mailto:sfic@singaporefurniture.com)



# Archidex 2017

## Kuala Lumpur Convention Centre Malaysia

Elmich Pte Ltd  
Booth No. 9B032

BAFCO Singapore Pte Ltd  
(Big Ass Fans)  
Booth No. 6F762

EWINS Pte Ltd  
Booth No. 6E765 & 6F768

Multimedia Engineering  
Pte Ltd  
Booth No. 6E763

TR Formliners Pte Ltd  
Booth No. 6E759

Vector Foiltec Pte Ltd  
Booth No. 6F760

Admira Pte Ltd  
Booth No. 8G208

Catalyste Pte Ltd  
Booth No. 8M263A

EDL Pte Ltd  
Booth No. 8J242

Greenlam Asia Pacific Pte Ltd  
Booth No. 8H227

TAK Products & Services  
Pte Ltd  
Booth No. 8E181

Kompacplus Pte Ltd  
Booth No. 1M178



### BAFCO Singapore Pte Ltd (Big Ass Fans) Booth No. 6F762



**Haniz Osman**  
Business Development Manager  
18 Tampines Industrial Crescent  
#06-07 Singapore 528605

T +65 6709 8500  
E [haniz.osman@bigassfans.com](mailto:haniz.osman@bigassfans.com)  
W <http://www.bigassfans.com/sg/>

Headquartered in Lexington, Kentucky, we design, engineer and manufacture overhead and directional fans that range in size from 45.7cm to 7.4m in diameter. Unlike typical fans, Big Ass Fans couple energy-efficient motors with patented aerofoil designs, inspired by airplane wings, to move large volumes of air quietly and efficiently. Backing up our work, we have 5 fans certified with Singapore Green Building Product (SGBP) labelling scheme.

Each Big Ass Fan is individually inspected and tested to ensure unmatched quality and performance. A testament to that approach is the company's research and development lab, the world's only such facility constructed specifically for testing large-diameter fans.





**Catalyste Pte Ltd**

**Booth No. 8M263A**

**CATALYSTE  
CATALYSTE  
CATALYSTE**

**Tony Chua**

Sales Manager

114 Lavender Street #02-52

CT Hub 2 Singapore 338729

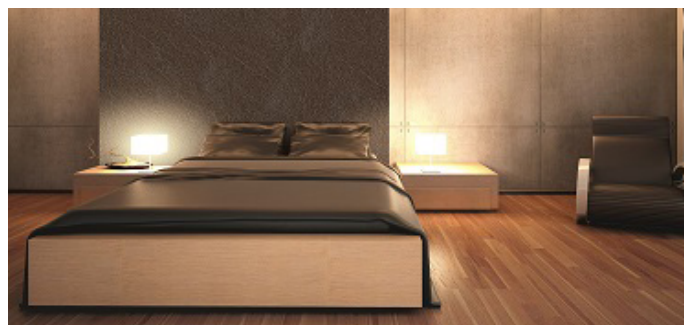
**T** +65 6493 2148 / +65 6909 0542

**E** [tonychua@catalyste.co](mailto:tonychua@catalyste.co)

**W** [catalyste.co](http://catalyste.co)

Based in Singapore, Catalyste looks to disrupt traditional mindset and processes. By collaborating with brands to explore uncharted markets, we connect the dots through a balance of ingenuity and diverse networks. We look to drive momentum and transformation to deliver extraordinary value to our stakeholders.

For Archidex 2017, Catalyste is pleased to introduce Alvic, Dekodur Distil and Fit Art into Malaysia.



**EDL Pte Ltd**

**Booth No. 8J242**

**E | D | L**

**Daphne Lim**

Director

EDL Building

43 Sungei Kadut Street 1

Singapore 729348

**T** +65 63690990

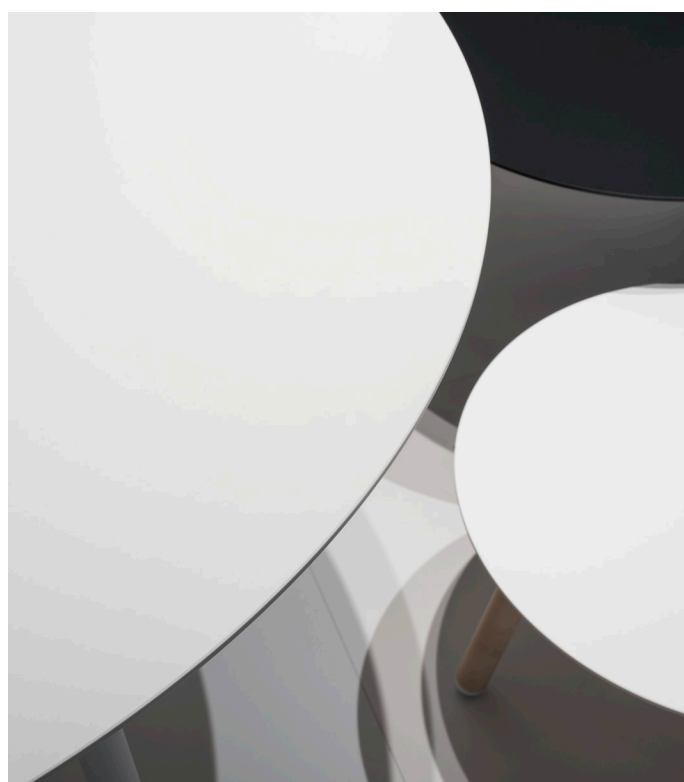
**E** [daphne.lim@edleuro.com](mailto:daphne.lim@edleuro.com)

**W** [www.edleuro.com](http://www.edleuro.com)

EDL is the leading specialist of high pressure laminates in Asia. The EDL story is one of ideas – great, insightful ideas that have shaped the company and its vision to what it is today. Just as laminates are more than paper and finish, our brand is more than just our product.

Going beyond the surface, we combine science and intuition to create design-centric, quality-driven laminates that endure the passage of time. Our product range has since expanded to include FENIX NTM and EDL Compact.

Everything we do is guided by a simple philosophy: To inspire experiences, one space at a time.



## Elmich Pte Ltd

Booth No. 9B032



### Cheryl Ong

Marketing Manager  
15 Joan Road Singapore 298899

T +65 6356 2800  
E info@elmich.com  
W www.elmich.com

Elmich is the leading provider of state-of-the-art and ecologically-minded urban landscaping, waterproofing, drainage, and stormwater management solutions to developers, contractors, and architects around the world.

Headquartered in Singapore with international offices in Australia, Germany, Malaysia, Switzerland and the United States, Elmich's network of partners cover more than 30 countries.

Backed by over 32 years of experience, Elmich prides itself as a professional, responsible and eco-sensitive company. With sound management practices certified under ISO 9001:2015, ISO 14001:2015 and SS ISO 22301:2012, Elmich has contributed to the successful completion of major projects around the world, many of which have achieved green building certifications or won building/architectural awards.



**EVALON®**  
EVA/PVC Membrane



**Marina Bay Sands Promenade**  
Singapore



**VersiJack®**  
Paver & Bearer Support



**VersiTank®**  
Stormwater Management



**IKEA, Doha Festival City**  
Doha, Qatar



**VersiWall® GP**  
Green Wall

**Oncidium Heights**  
Kota Kemuning, Malaysia

## EWINS Pte Ltd

Booth No. 6F765 & 768



### Ross Seah

Marketing Communications  
Manager  
39 Sungei Kadut Avenue,  
Singapore 729663

T +65 6459 3311  
E ewins@singnet.com.sg  
W www.ewins-group.com

Ewins, established in 1967, celebrates her 50th anniversary this year. The Singapore-based company is a specialist purveyor of furniture components and fittings, architectural hardware, and innovative surface materials.





## Greenlam Asia Pacific Pte Ltd

Booth No. 8H227



### Banita Mishra

General Manager, Marketing  
11 Sungei Kadut Crescent,  
Singapore 728683

T +65 6365 9138  
E [info@greenlam.com](mailto:info@greenlam.com)  
W <https://www.greenlam.com/sg/>

Greenlam is the Asian market leader in High Pressure decorative laminates. It features the widest range of innovative laminate designs in an exclusive array of finishing and textures. With additional expertise in technical excellence, Greenlam is the first laminate company in Asia to feature a complete range of anti-bacterial laminates. Its superior design also complies with international quality standards, like those NEMA of the United States and British Standard of the United Kingdom while its quality, environmental systems and processes are ISO 9001, ISO 14001, OHSAS 18001, GREENLABEL and GREENGUARD certified.



## Kompacplus Pte Ltd

Booth No. 1M178

### Brenda Wong

Sales Manager  
280 Woodlands Industrial Park E5  
#04-15, Singapore 757322

T +65 6842 0335  
E [enquiry@kompacplus.com](mailto:enquiry@kompacplus.com)  
W [www.kompacplus.com](http://www.kompacplus.com)

KompacPlus was set up in 2009 to provide interior designers and homeowners an innovative yet stylish material surface that serves as an alternative to the conventional kitchen countertop surfaces.

Our expertise lies in the supply and installation of full suite surfacing solutions that are designed and crafted in Italy.

Each and everyone of us is encouraged to live by the brand values and promises everyday. These values are evident all throughout - from the innovativeness of the product, right to the service given to our customers.

#ExperienceKompacPlus



# kompacplus





## Multimedia Engineering Pte Ltd

Booth No. 6E763

### Stefpenny

Product Specialist

50 Bukit Batok Street 23, #05-15

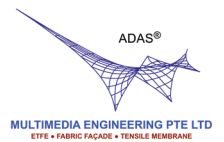
Midview Building, Singapore 659578

T +65 6765 6288

E penny@me.com.sg

W <http://www.me.com.sg/>

Multimedia Engineering Pte Ltd offers a full range of services from conceptual design, modelling, computer simulation, load analysis, fabrication drawing, submission to authority for approval, liaise with consultants, project management, contract supervision, site installation, handover and maintenance. What we do is to ensure that our clients receive the best professional solutions in the design and build of tensile membrane, ETFE system, Fabric Façade, nodal spaceframe, lightweight and long span structures.



## TR Formliners Pte Ltd

Booth No. 6E759

### Darryl Lee

Sales Director

30 Kallang Place #05-18/19

Kallang Basin Ind. Est.

Singapore 339159

T +65 6297 7981

E darryl@technorite.com.sg

W [www.reckli.net](http://www.reckli.net)



TR Formliners Pte Ltd is the exclusive agent for RECKLI's products in Singapore & Malaysia. With more than 250 formliner designs & an ability to offer unique individual bespoke ideas, RECKLI has helped to texture many building facades, long recognised as a building's flagship. Its high standard of aesthetics and quality make TR Formliners a strong partner for the design of architectural concrete.





**Matthew Penrose**

Vice-President Sales

**Michael Peh**

Senior Sales Manager

72B Pagoda Street, Singapore 59231

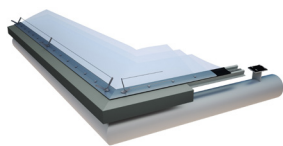
T +65 6225 0628

E [sg@vector-foiltec.com](mailto:sg@vector-foiltec.com)

W [www.vector-foiltec.com](http://www.vector-foiltec.com)

Established in 1981, Vector Foiltec invented ETFE (Ethylene-Tetra-Fluoro-Ethylene) cladding technology and is the global marketing-leading specialist. Today, we manufacture our product under the trademark Texlon® and operate two high capacity production facilities. As well as holding the world's most comprehensive body of related research data, we also continue to bring further technical innovation to the industry.

Our position as market leader stems from our unrivalled ability to identify core project challenges and deliver elegant and cost-effective engineering solutions. Our dynamic company culture and our international presence enables us to react promptly to global project demands, ensuring fast response times and a reliable service.



Maintaining in-house multidisciplinary expertise continues to be a key factor in our success, enabling us to resolve complex design issues efficiently. Our turnkey design & build services range from: the initial concept through to scheme design; climate-based optical and thermal assessment; and foil and structural engineering analysis. Additionally, Vector Foiltec provides specialised production, installation and after-sales services. Our primary goal is to deliver reliable cost effective solutions for our clients within a short timeframe, while remaining true to the aesthetics of the individual projects.

We have state of the art production facilities located in Bremen and Beijing. Our production facilities are dedicated to Texlon® ETFE foil production and each factory has an area of approximately 5000m<sup>2</sup>. Our current foil handling production capacity is approximately 500,000m<sup>2</sup> per annum of cushions, equivalent to approximately 1,500,000m<sup>2</sup> of foil.



Organised by



Supported by



International  
Enterprise  
Singapore

Singapore Furniture Industries Council  
新加坡家具工业理事会

62 Sungei Kadut Loop  
#04-19 International Furniture Centre  
Singapore 729507

**T** +65 6569 6988

**F** +65 6569 9939

**E** [sfic@singaporefurniture.com](mailto:sfic@singaporefurniture.com)

**W** [www.singaporefurniture.com](http://www.singaporefurniture.com)

Information in this brochure is correct as at time of print and subject to change without prior notification.